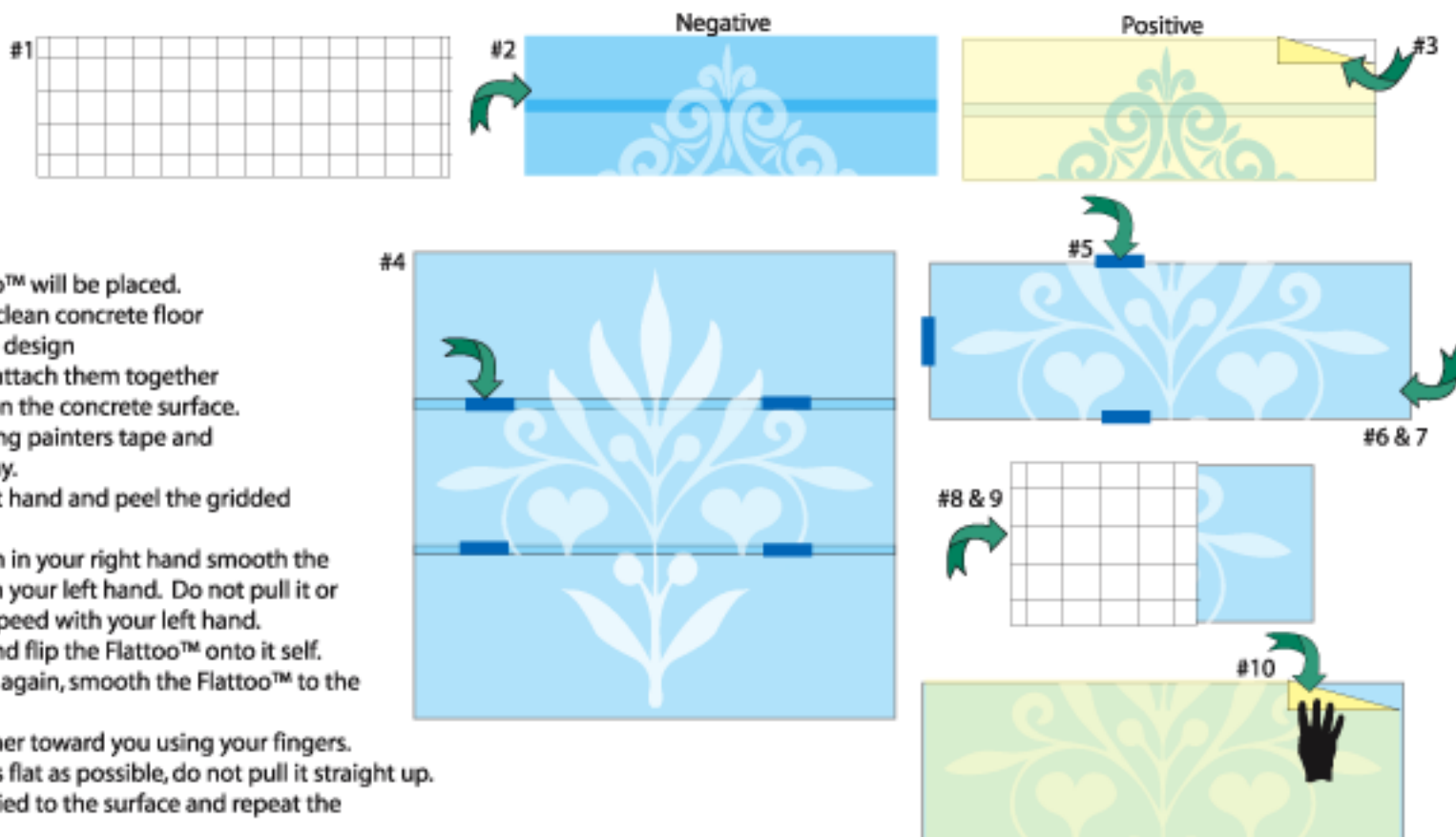


# FLATTOO™

## Step by Step Instructions

### Parts of the Flattoo™

- #1. Protective backing (usually gridded)
- #2. Vinyl Flattoo™ design
- #3. Top tape



### Step by step Flattooing™

1. Identify the exact position the Flattoo™ will be placed.
2. Layout all parts of the Flattoo™ on a clean concrete floor
3. Align all parts with the overlap of the design
4. Using blue painters tape temporarily attach them together  
This will allow you exact placement on the concrete surface.
5. Lock down the center most piece using painters tape and move the other pieces out of your way.
6. Lift the unattached end with your left hand and peel the gridded backing off the Flattoo™.
7. Holding the exposed adhesive design in your right hand smooth the Flattoo™ to the concrete surface with your left hand. Do not pull it or force it, simply control the lowering speed with your left hand.
8. Remove the tape from the left side and flip the Flattoo™ onto it self.
9. Remove the gridded paper and once again, smooth the Flattoo™ to the surface.
10. Remove the top tape by rolling a corner toward you using your fingers.  
\*very important...keep the top tape as flat as possible, do not pull it straight up.
11. Align the next piece to the piece applied to the surface and repeat the application process.
12. Apply a plastic skirting using painters tape around the whole Flattoo™ before etching.  
This will create a safety zone.

